

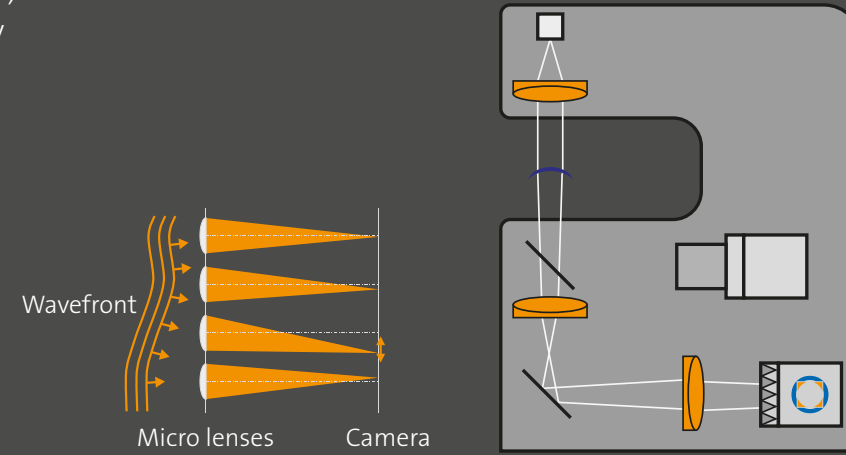
SHSInspect CL – All you've ever wanted to know about your contact lenses

Finished lens testing with SHSInspect prio – working principle

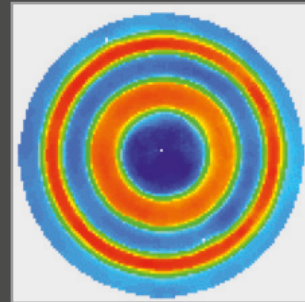
Optocraft's instruments use cameras for different purposes:

SHSCam: measurement of refractive data, power map and imaging quality

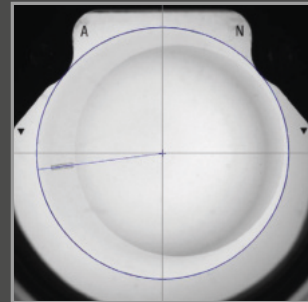
VCCam: detection of lens position, diameter, marks, etc.



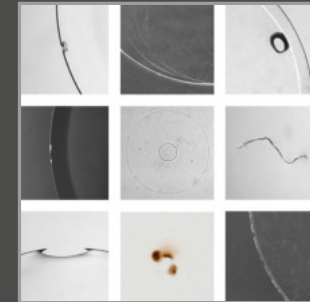
Measurement results



Power mapping for smooth and step designs: graphical and numerical evaluation



Measurement of lens position, diameter and orientation

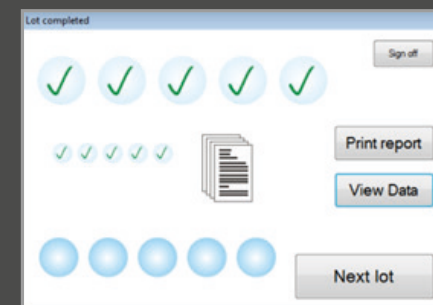


Defect visualization: bright field, dark field, telecentric illumination

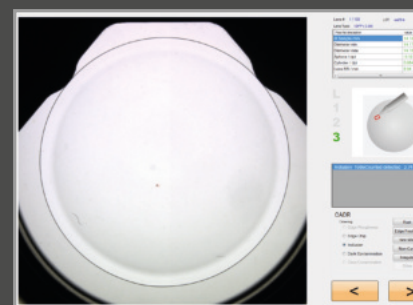
User friendly from A to Z, easy to integrate



Excellent ergonomics



Paperless reporting, database storage



Easy to use, flexibly adaptable GUI

Why Optocraft?

Optocraft has been developing and manufacturing Shack-Hartmann wavefront sensors since 2001. With decades of experience in optical measurement technology and design of optical systems, we constantly push the limits of this technology. Our systems can be found all over the world and cover even the most demanding applications. Our customers enjoy our dedicated and reliable support.

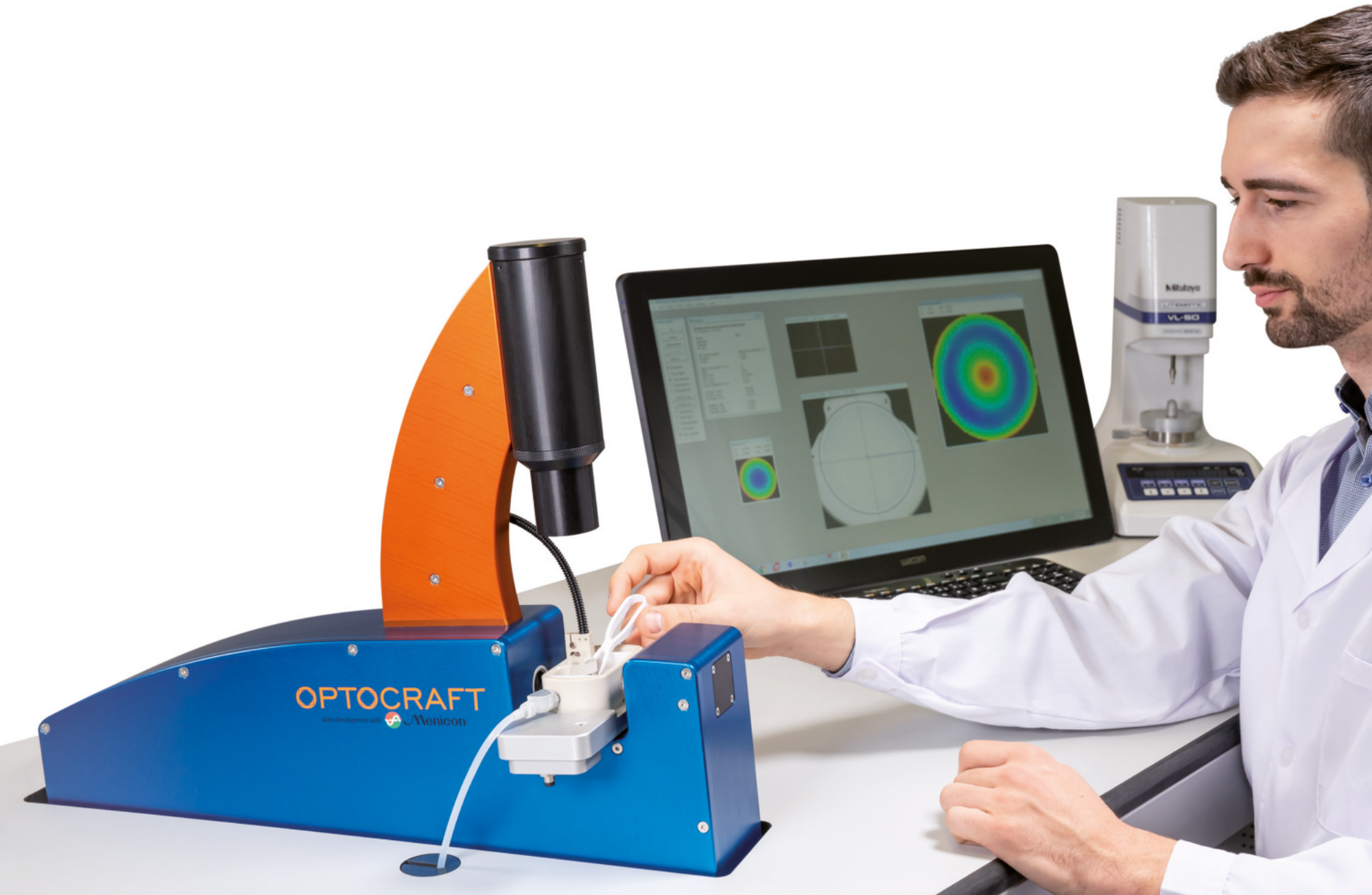
We love to be challenged, try us!



Contact us!

Tel. +49 9131 691500

sales@optocraft.com



Know your quality.

Fast | Accurate | Ergonomic | Multifunctional



OPTOCRAFT GmbH · Am Weichselgarten 7 · D-91058 Erlangen

SHSInspect CL

Leading metrology for CL/IOL

The SHSInspect CL family

Optocraft develops and manufactures a complete range of measurement solutions for the contact lens industry. This includes semi-finished and finished lens testing, surface measurement and inline measurement.

RGP and dry lenses

RGPs and other dry lenses (unhydrated lenses, ortho-k lenses, etc.) vary significantly in their geometry and optical parameters. The **SHSInspect prio** handles them all and provides instantaneous results.

Soft lenses

Handling and measuring soft and daily contact lenses in liquid is delicate. The **SHSInspect prio** measures the lenses in less than a second and provides superior multifunctionality and ergonomics using the optional top-open cuvettes temperature control and filtering system.

Semi finished lenses, molds, inserts, tool offset

The quality of optical surfaces is vital for high quality lenses. **SHSInspect autoROC** measures radius of curvature, asphericity and surface deviation of RGP lenses, inserts and molds as well as the tool offset in lathe cutting processes – all in one go.

Inline metrology for production lines

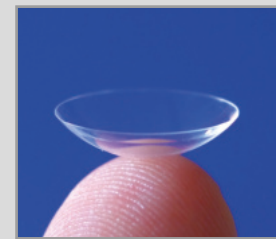
SHSOphthalmic instruments are also available as modules for high volume manufacturing lines. Their high speed operation reduces cycle times. Moreover, their hardware and software interfaces ensure a simple and seamless integration.

Customized solutions

Optocraft also offers customized solutions developed and validated to individual customer requirements and specifications.

Why SHSInspect?

- Excellent accuracy and reliability
- High measurement speed
- Multifunctional system layout
- Superior design and build quality
- Excellent ergonomics
- Powerful software for manufacturing and R&D



Finished lens testing instruments

Modular instruments for fast & reliable wavefront measurements

SHSInspect prio

Powerful and modular standard solution – available off-the-shelf

- Sphere, cylinder, axis, prism
- Multifocal evaluation: zones, addition
- Wavefront and Imaging quality
- Diameter

Make lens quality your PRIORITY

- Configurable to your needs
- Upgradable in the field
- Fastest lens handling in the industry
- Temperature-controlled
- Ergonomic, easy to handle
- Advanced wavefront & powermap evaluation



Surface and inline metrology

Precision instruments for the production of high quality contact lenses

SHSInspect autoROC

Surface metrology for RGPs, molds, inserts, lathe calibration

- ROC and surface shape
- ROC traceable to international standards
- Short cycle time per lens



SHSInspect 1Xpass module

Optocraft instruments are available as modules for integration into production lines.

- Robust hardware for rough environments
- Fully automated measurement process
- Control interface for seamless integration
- Customization available



“For several years, we use Optocraft’s instruments in production and development of contact lenses. Functional range and quality of the instruments, but also the excellent and obliged support are of very high value for us in the daily business.”

Stefan Muckenhirn, Hecht Contactlinsen GmbH